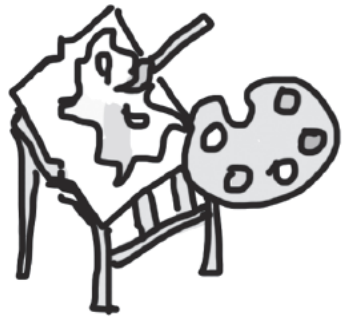


Welcome to

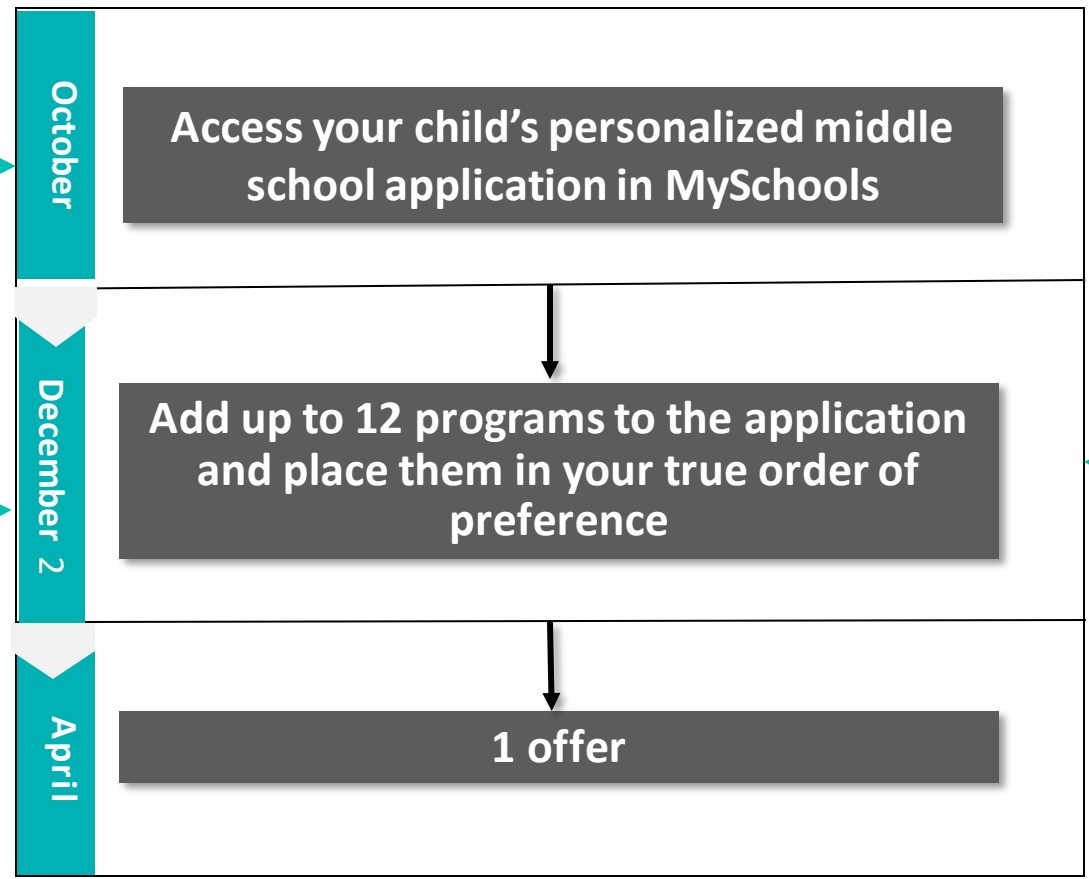
Middle School Admissions



How do we apply?

Your elementary school will provide clear instructions on how to access your online application.

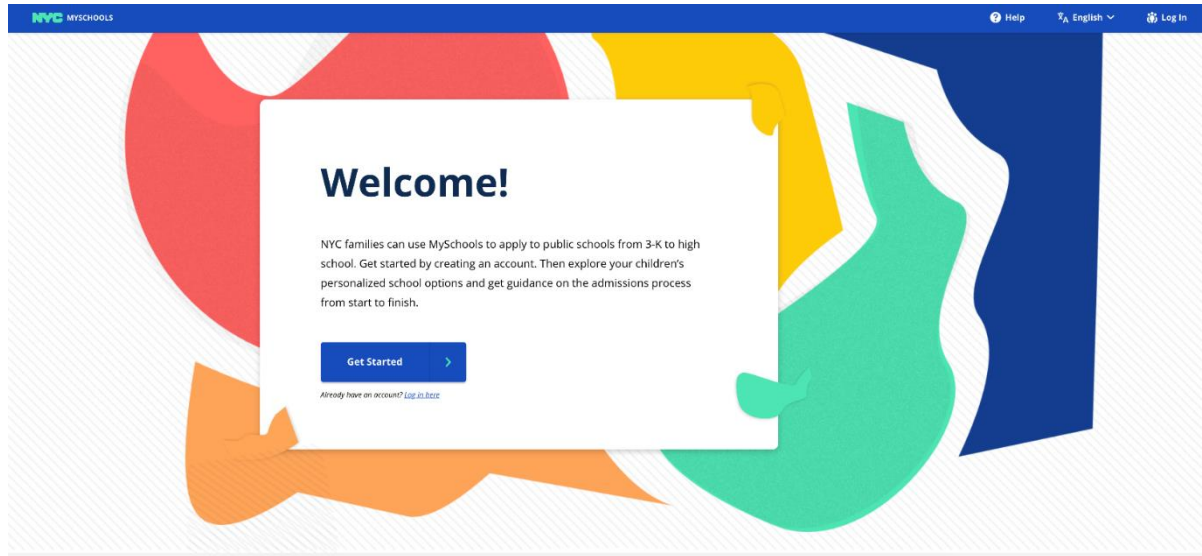
Optional Step:
Mark Twain Testing: students interested in testing at Mark Twain I.S. 239, located in Coney Island, may register to test in MySchools.



MySchools is both an online directory and your child's personalized application. It will include as options every middle school that your child is eligible to attend.

How do we apply?

This fall, you can complete your child's middle school application online at **MySchools.nyc**.



- Create an account with your personal email address.
- To add a student to your account, you will need:
 - Student ID (OSIS)
 - Account Creation Code (Invitation letters will be mailed home; they also can be received at your child's current school.)

The online application will be mobile device friendly, and all documents will be available in the nine languages* translated by the NYCDOE (Spanish, Chinese, Bengali, Russian, Arabic, Urdu, Haitian Creole, Korean, and French).

Access and review your child's application

When you access the application in MySchools, **be sure to review all information about your child:**

- ✓ Make sure all personal information, including your child's address, is correct.
- ✓ Make sure your child's academic record is accurate.

Need help?

- Talk to your school counselor
- Visit a Family Welcome Center
- Call us at **718-935-2009**

If you see anything on your application that is inaccurate, contact your child's current elementary school as soon as possible.

Learn about schools

When you log into MySchools, you will have a personalized list of schools to choose from.
All the DOE public schools that your child can apply to will be included:

<p>Your zoned school</p> <p>Learn if you have a zoned middle school at MySchools.nyc</p> <p><i>(There are no zoned middle schools in District 3)</i></p>	<p>District schools</p> <p>Open to all students who live and/or attend public elementary school in the district.</p> <p>If your child lives in one district and goes to school in another, they are eligible to apply to district schools in both districts.</p>	<p>Boroughwide schools</p>	<p>Citywide schools</p>
--	---	-----------------------------------	--------------------------------

Charter schools have a separate admissions process and are not part of the middle school application.

Choose schools for your child's application

Explore your middle school options in MySchools and add programs to your application.

How do you choose where to apply? Consider the following:

Travel

How will your child get from home to school each day?

How long is the commute?

Visiting the school is a good way to see what this trip is like!

Programs and courses offered

Are there specific academic courses, clubs, activities, or sports that appeal to you and your child?

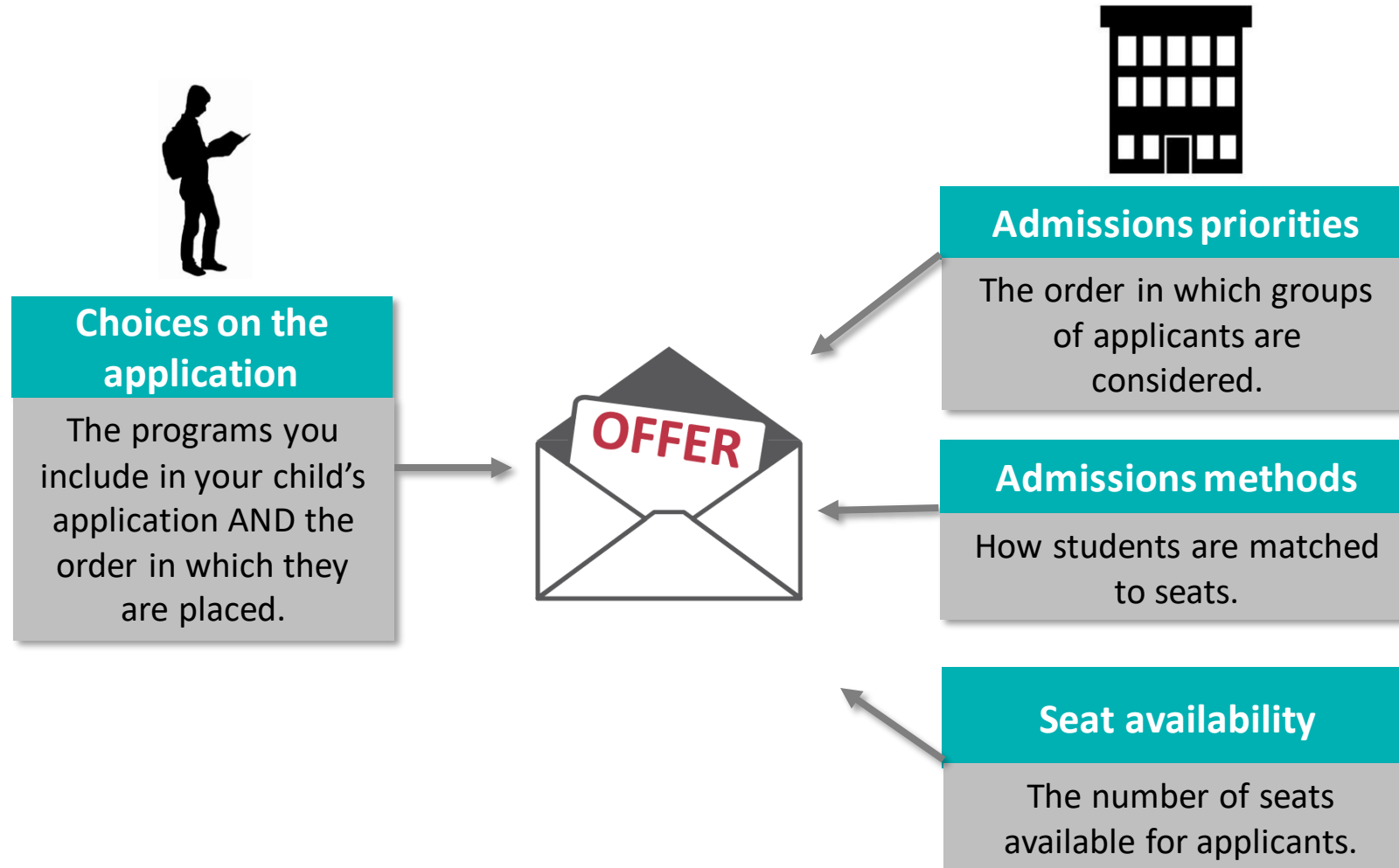
School size

How many students go to the school?

Mission and vision

What makes the school special?

How do students get middle school offers?



Blind Ranking

- This fall, all middle schools – including those in District 3 – will not be able to see how families have ranked them on their middle school applications.
- Screened middle schools will continue to see biographical and academic information, including:
 - Final 4th grade report cards
 - 4th grade New York State ELA and Math Exam scores
 - Attendance and Punctuality
 - Academic and personal behaviors.
- Some screened middle schools will continue to have interviews or exams.
- Students will continue to receive one offer for middle schools.

Blind Ranking: Why is this good for families?

- Families can rank schools on the middle school application in their true order of preference. They do not need to strategize on how they rank schools.
- Families will be considered by all schools to which they have applied, regardless of where the school was ranked on their middle school application.

Complete your child's application

- Add up to 12 program choices to your child's application.
- If a school has multiple programs, you may apply to one program or more than one program at that school.
- Be sure to place programs in your true order of preference, with your favorite program as #1.
- Submit the application by **December 2, 2019**.

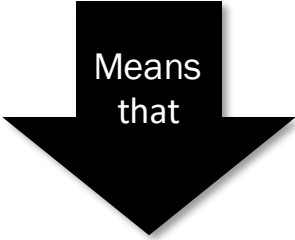
TIP | After adding your favorite programs, consider adding more choices to your application. Remember, if you do not get an offer to a program from your application, you will be matched to another program with availability in your district.

TIP | Rank programs you'd prefer to your zoned or continuing school ahead of your zoned or continuing school.

Admissions priorities

At some schools, students are considered in groups. All students in the first priority group will be considered first. If seats are available, students in the second priority group will be considered next, and so on.

Admissions Priorities: ❶ Priority to students and residents of District 3 ❷ Then to students and residents of Manhattan



Means
that

All students who live or go to school in the district who add this program to their application will be considered before **other Brooklyn students** who list this program on their application.

District 3 Diversity Plan - Admissions priorities

District 3 implemented a districtwide plan to increase middle school diversity.

The development of the plan was driven by local parents and educators, including the District 3 Community Education Council and its Middle School Committee, the District 3 superintendent, and District 3 elementary and middle school principals.

- Under this plan, students who are **FRL-eligible and lowest-performing** are considered to be part of **Group A**, while students who are **FRL eligible and lower-performing** are considered to be part of **Group B**.
- The admissions plan gives a priority at each District 3 middle school of:
 - 10% of seats to students in Group A
 - 15% of seats to students in Group B
 - The remaining 75% of seats are open to all students.

Admissions methods

An admissions method is the way a school program considers and matches with applicants. Schools that use these admissions methods **do not** see any academic information.

Zoned Based on address	Open Random selection	Limited unscreened Random selection, but students will move into a higher priority group by signing in at a school event
----------------------------------	---------------------------------	--

TIP | If applying to a “limited unscreened” program, visit and sign in!

Admissions methods

An admissions method is the way a school program considers and matches with applicants. Schools that use these admissions methods **do** see academic information.

<p>Screened</p> <p>School ranks students based on fourth-grade attendance, state test scores, and grades—there may be additional requirements</p>	<p>Screened for language</p> <p>Based on students' English language skills</p>	<p>Composite score</p> <p>Students are admitted based on a score that's calculated using fourth grade report cards, state ELA and math exams, attendance, and behavior.</p>
--	---	--


Selection criteria

Programs with **Screened, screened: language, or composite score** admissions methods use specific selection criteria to admit students.

For the most up-to-date information, please contact middle schools directly.



PROGRAMS OFFERED

(I.S. 123) Academic Honors Program Program Code: A123S

Admissions Method:  Screened

Program Eligibility: Open to students and residents of Brooklyn

Prior Year Admissions	Applicants	Seats	Applicants Per Seat	Seats Filled
General Education	225	55	4	Yes
Students with Disabilities	75	18	4	Yes

Admissions Priorities:  Priority to students and residents of the District  Then to students and residents of Brooklyn. *Last year, this program admitted students from all priority groups.*

Selection Criteria: Academic and Personal Behaviors - Attendance - Final 4th Grade Report Card - Punctuality - 4th Grade New York State ELA and Math Exams

Key dates

Fall	Attend open houses and middle school fairs Contact schools directly to learn when to visit, and find middle school fair dates on our website: schools.nyc.gov/Middle .
October	Access the middle school application in MySchools
December 3	Apply to middle school by December 2, 2019
April	Get your child's middle school offer
May	Appeals Round – Only for seats that remain after the main round

Resources

Learn more

- 2019 NYC Middle School Directory | schools.nyc.gov/Middle
- Middle school admissions email list | schools.nyc.gov/Connect
- Your zoned school | MySchools.nyc

Get help with your child's application

- Your school counselor
- Visit a Family Welcome Center | schools.nyc.gov/WelcomeCenters
- Office of Student Enrollment | **718-935-2009**